

APOLLO THEATER

Main Stage
Technical Specifications
July 2017

APOLLO THEATER
253 West 125TH Street
New York, NY 10027
Main Office (212) 531-5300
(M-F 10:00AM 6:00PM)

TABLE OF CONTENTS

Table of Contents.....	2
General Information.....	3
Stage Specifications.....	4
Line Set Schedule.....	5
Soft Goods/Staging.....	6
Multimedia Projector & Screens.....	7
Lighting System	8
Audio System.....	9
Microphones and Communications	10
Backline	11
Dressing Rooms.....	12
Points of Interest.....	13

AUDITORIUM SEATING CAPACITY

Total Capacity.....1,578

Orchestra.....617

Lower Mezzanine.....503

Upper Mezzanine.....386

Orchestra Boxes.....20

Lower Mezz Boxes.....12

SRO.....40 (depends on production and press needs)

Load In/Out Access

- Loading Dock is street level on W. 126th St. between Adam Clayton Powell & Frederick Douglas (7th and 8th avenues)
- Loading door to the stage is on street level (down an alley from the dock doors)
 - Door is 8'5'' wide by 11'4'' tall
- Deliveries
 - Large deliveries should come to the loading door on 126th.
 - Smaller packages will come to Security on 125th.

TRUCK & BUS PARKING

- On W. 126th street
- Long term truck and bus parking must be prearranged and require permits from the city.

CAR PARKING (not affiliated with Apollo)

125th Street Garage

121 West 125th Street New York, NY 10027

(212) 531-3418

MAIN STAGE STAGE SPECIFICATIONS

DIMENSIONS

Proscenium Width.....	36' 10" wide
Floor to Proscenium Opening.....	28' 2"
At center line to the front of the apron.....	4' 5"
Floor to Grid.....	56' 5"
Proscenium wall to back wall.....	29.5'
Plaster Linen to back wall length.....	28'
Main Curtain (Guillotine).....	30' high x 60' wide
Stage to Lighting Console (FOH).....	52' 11"
Removable Stairs: 2@.....	49" L x 42" W x 35" H

RIGGING:

Line set schedule on page 5

Type: Single Purchase

Number of sets: 34

Number of Line-sets available: 32 (LS #23 & #30 have non-movable house hang)

Line centers: 8" – 12" varies per line set.

Number of lift lines per set: 4 (bridles at the batten)

Batten length: 46'

Safe load: 800lbs distributed

Fly rail location: Stage level, Stage Left

Loading floor location: 2rd floor

Grid height: from stage to beams 56'5"

Grid Pipe: 7 @ 2 1/4" & 15 @ 3" (all 3' long sch40)

LIGHTING TRUSSES

Truss # 1: 2' wide x 7' high x 45' long

Truss # 2: 2 1/2' wide x 6 1/2' high x 45 1/2' long

Truss # 3: 2 1/2' wide x 6 1/2' high x 45' long

THE APOLLO THEATER

LINE SET SCHEDULE

PIPE	DIST.	RIGGING	CAPACITY	TRIM	Apollo Assignment	NOTES
FOH BEAM	-1'-0"	Motor			FOH Lighting	.5" STEEL BEAM
FIRE CURTAIN	5'-5"	Cut Rope	N/A		Fire Curtain	Keep Under Clear
1	1'-4"	Counter Weight			House Curtain	Motorized
2	1'-10"	Counter Weight	800 lbs.		Legs	
3	2'-0"	Counter Weight	800 lbs.		Empty	
4	2'-7"	Counter Weight	800 lbs.		Movie Screen	28'w x 16' high
5	2'-10"	Counter Weight	800 lbs.		Full Stage Black	
Lighting Truss	4'-8"	Motor			Lighting Truss	2' truss, walkable for focus
6	6'-0"	Counter Weight	800 lbs.		Empty	
7	6'-4"	Counter Weight	800 lbs.		Empty	
8	7'-0"	Counter Weight	800 lbs.		Empty	
9	7'-8"	Counter Weight	800 lbs.		Border	
10	8'0"	Counter Weight	800 lbs.		4x3 Screen	14'w x 10.5'high
11	8'-11"	Counter Weight	800 lbs.		Legs	
12	9'-2"	Counter Weight	800 lbs.		Whitre Scrim	
13	9'-8"	Counter Weight	800 lbs.		Empty	
14	10'-5"	Counter Weight	800 lbs.		Border	
15	10'-9"	Counter Weight	800 lbs.		Empty	
16	11'-1"	Counter Weight	800 lbs.		Empty	
17	11'-5"	Counter Weight	800 lbs.		Black Scrim	
18	11'10"	Counter Weight	800 lbs.		Empty	
19	12'-6"	Counter Weight	800 lbs.		Empty	
Lighting Truss	14'2"	Motor			Lighting Truss	2' truss, walkable for focus
20	15'-6"	Counter Weight	800 lbs.		Empty	
21	15'-10"	Counter Weight	800 lbs.		Border	
22	16'-2"	Counter Weight	800 lbs.		Empty	
23	16'-6"	Counter Weight	800 lbs.		Amateur Night Sign	9" thick, delicate
24	17'-7"	Counter Weight	800 lbs.		Empty	
25	18'-1"	Counter Weight	800 lbs.		Border	
26	18'-8"	Counter Weight	800 lbs.		Legs	
27	19'-2"	Counter Weight	800 lbs.		Empty	
Lighting Truss	10'-6"	Motor			Lighting Truss	2' truss, walkable for focus
28	22'-7"	Counter Weight	800 lbs.		Border	
29	23'-3"	Counter Weight	800 lbs.		Legs	
30	23'-11"	Counter Weight	800 lbs.		Blade Sign	
31	24'-7"	Counter Weight	800 lbs.		Empty	
32	25'-5"	Counter Weight	800 lbs.		Empty	
33	28'-0"	Counter Weight	800 lbs.		Full Stage Black	
34	28'-2"	Counter Weight	800 lbs.		Gold Curtain	

STAGE RISERS (Staging Dimensions)

- 18 @ 4'x8'
- 2 @ 2'x8'
- 6 @ 4'x4'x 5'8'' Triangles
- Legs
 - 38 @ 8''
 - 44 @ 16''
 - 78 @ 24''

LECTERNS

- Clear Plexiglas
 - 4'1" high x 3' 5" wide x 1'4.5" deep
 - Front: 2' high x 2' wide

MAIN STAGE SOFT GOODS INVENTORY

(all dimensions are width x height)

- 8 @ Black Velour legs.....20' x 25'
 - all legs are 15'10" off center
- 3 @ Black Velour Borders.....40' x 10'
- 2 @ Black Small Borders.....50' x 2'
- 1 @ White Scrim.....45' x 25'
- 1 @ Full Stage Black.....60' x 30'
- 1 @ Gold Drop.....40' x 30'

MULTIMEDIA/PROJECTIONS

- Panasonic EX12KU-XGA LCD 12k Projector w/2.6 – 3.5 zoom lens
 - Located on the 1st balcony rail
- 2 @ Dell Laptops
 - Power Point presentations only
- 1 @ MacBook Pro
- 2 @ Toshiba DVD players
- 1 @ Octo Quattro Switcher with 4-input channels
 - Model: OTR401

MAIN STAGE PROJECTION SCREENS & SURFACES

(all screens are front-projection)

- Movie Screen
 - Line set #4 is the House Position
 - 36'6" from house projector location
 - 28'x16' in size
 - Full stage with masking
 - Perforated Matte White
 - Gain: approx. 1.0
 - Manufacture: MDI in Montreal
- Flown Projection Screen
 - Line set #10 is the House position
 - 41'8" from house projector location
 - 14' x 10.5' (4x3 aspect ratio)
 - White Vinyl w/6" black border
- Apollo Stage Back Wall
 - Back wall of the stage
 - 60' from house projector location
 - Brick wall painted Neutral Density Grey

LIGHTING SYSTEM

CONSOLES

- 1 @ Grand MA 2 (full)
- 1 @ ETC ION
- 4 @ Color Monitors

DIMMER RACKS QTY ITEM

- 5 @ ETC Sensor 96x2.4K DIM RACK SP3-96

LIGHTING UNITS QTY ITEM

- ETC Source Four
 - 2 @ 5 degree
 - 2 @ 10 degree
 - 30 @ 19/26/36/50 degree
 - 130 @ S4 PAR
- 54 @ PAR 64 (1K)

CYC UNITS

- 12 @ Altman Focusing Cyc 1000W-FGT-QT4/4

MOVING LIGHTS

16 Robe Blade Spots (4 FOH, 12 over head on stage)
4 High End System Studio Beam (16 Channels per unit) (ground row)

FOLLOW SPOTS

- 4 @ Lycian 3K Xenon

AUXILIARY POWER

- Basement Stage Right
 - 1 @ 200-amp cam-lock with ISO transformer
 - 2 @ 100-amp bare end
- Stage Right Deck
 - 1 @ 100-amp cam-lock
- Fly Loft Stage Right
 - 1 @ 100-amp cam-lock
 - 2 @ 400-amp cam-lock

SOUND and COMMUNICATION SYSTEMS

- **d&b audiotechnik loudspeaker systems**
 - 2 @ Midas PRO9 (FOH & Monitor mixing consoles)
 - 7 @ d&b D80 four channel digital signal processor/power amplifiers drive the Main Arrays, Subwoofers & Front Fills
 - 9 @ d&b D12 dual channel signal processor/power amplifiers

The d&b FOH rig includes:

- 10 @ V-Series Line Arrays Left & Right (eight V8 above two V12 per side)
- 2 @ J-Subs (under the stage)
- 1 @ J-INFRA Sub (under the stage)
- 4 @ E8 Front Fills (under the stage)

Stage Monitor package:

- 11 @ d&b M4 floor wedges (10 Floor, 1 Cue, 12 mixes onstage)
- 1 @ B4 Drum Subwoofer
- Left/Right Side Fill Stacks (per side)
 - 1 @ Q7
 - 2 @ Q Subs per side

The Midas Pro9 mixing consoles feature:

- 88 @ XL8 microphone pre-amps
- 70 @ Delay & phase corrected group/aux/matrix/monitor mix busses [35 per console]
- 10 @ VCAs, full Preset automation, equalization & dynamics on each input channel & output bus, and a wide range of digital effects plug-ins.
- *The Console system is fitted with KT DN9650 Network Bridges at each Control Surface The Monitor Console includes a KT DN9331 motorized Graphic EQ Controller*

The Console system I/O complement includes:

- 2 @ DL251 48 analog mic/line input x 16 analog outputs backstage
- DL451 modular i/o frame with 24ch AES 96kHz outputs to d&b Audiotechnik D80 & D12 Mains & Stage Monitor Amplifiers
- DL444 'D-Sub' card providing 8 analog XLR outputs @ FOH & Monitor Control Surfaces
- DL443 8ch Analog TRS Inserts @ FOH & Monitor Control Surfaces
- DL452 8ch Digital AES I/O @ FOH & Monitor Control Surfaces

MICROPHONES

3 @	AKG 414	7 @	Sennheiser 421
2 @	AKG 419	2@	Sennheiser 441
1 @	AKG 460B	1 @	Sennheiser 604
2 @	AKG D112	2@	Sennheiser 609
1 @	AKG c460 B	3@	Shure Lavs
1 @	AKG C411	3@	Shure 55-SH
1 @	Audio Technica AT4050	2@	Shure Beta 52A
1 @	Audio Technica ATM350	14@	Shure SM57
2 @	Audio Technica AE3000	8 @	Shure Beta 57
1 @	Audix D2	6 @	Shure Sm58
3 @	Behringer C-2	3 @	Shure Sm58 (switched)
2 @	Beyerdynamic M69	1 @	Shure Sm58 (switched)
1 @	Beyerdynamic M88	3 @	Shure SM81
2 @	Countryman Omnidir. Lavs	1 @	Shure SM91
2 @	Countryman Headsets	1 @	Shure Beta 91
1/4@	DPA d:fine Direct. Headset	2 @	Shure Beta 98
2 @	DPA d:vote 4099B	4 @	Shure Beta 98A
4 @	Electro-Voice RE20	2 @	Shure Beta 98H
5 @	Electro-Voice 468	4 @	Shure Beta 98 AMP
5 @	Neumann KM 184	4 @	Shure MX 202
2 @	Neumann KM 185	1 @	Shure MX 391
2 @	Neumann KM 100	5 @	Shure MX 393/S
3 @	Neumann KM 184D	1 @	Shure PE54d Switch
1 @	PE 515 (switched)	2 @	Shure WH30 Headsts
1 @	Rode X/Y	10@	Shure UHF-R Duel Wireless Sys. (1 floater, 1 on Soundstage)
6 @	Shure UR4D units		

DI Boxes

5 @	BSS Audio Active DI
6 @	Countryman DI
7 @	Radial Stereo Passive DI
1 @	Radial JDV Active DI
1 @	Whirlwind Isopod
1 @	Whirlwind PC DI
1@	8-Channel Mult Box

Communications

6 @	Clear-Com KB-702GM
3 @	PL Pro MS-440
1 @	HME PRO 850 (Out for repair)
15@	Single Channel Packs
4 @	Duel Channel Ppacks
4 @	Wireless Duel Channel Packs
2 @	Stereo Headset (1 needs muff)
9 @	Single Ear Headsets
6 @	Lightweight Single Ear Headsets

Backline

PIANO

1 @ BALDWIN SF 10.7

KEYBOARDS

2 @ Korg Kronos 88 Key

2 @ Korg Kronos 73 Key

1 @ Korg Triton

1 @ Korg Triton Pro

1 @ Yamaha Motif 8

GUITAR AMPS

2 @ JC-120

1 @ Deville 410 III

1 @ Hot Rod Deville 212

BASS AMPS

1 @ Eden Bass Amp

1 @ Eden Bass Cab (4x10)

1 @ Epifani UL501 Head

1 @ Epifani Cab (4x10)

1 @ Hercules GS415B
single guitar stand

20@ Music Stands

DRUM KIT

(DW Black Shell Kit)

1 @ 8" DW Tom

1 @ 12" DW Tom

1 @ 14" DW Tom

1 @ 16" DW Tom

1 @ 18" DW Floor Tom

2 @ 14" x 6.5" Snare (REMO Head)

1 @ 14" x 7.5" Snare (REMO Head)

1 @ 20" DW Kick (Apollo Logo)

1 @ 22" DW Kick (Apollo Logo)

4 @ 14" Zildjian High Hat

2 @ 16" Zildjian Crash

2 @ 18" Zildjian Crash

2 @ 20" Zildjian Ride

6 @ Cymbal Stands

2 @ Snare Stands

2 @ High Hat Stands

1 @ Single DW Kick Pedal

1 @ Single DW Kick Pedal

1 @ Double DW Kick Panel

1 @ DW Thrown

1 @ Drum Baffle

2 @ Black Drum Rug

DRESSING ROOMS

(11 Dressing rooms in total)

- Two (2) 'Star' Dressing rooms located off the Green room each containing:
 - ADA Accessibility
 - Private Bath & Shower
 - Mini Fridge
 - Video & Audio Monitoring
 - 10'x9'6"
 - Accommodates 1-2 people

- Nine (9) 'Historic Stack' Dressing rooms located Off Stage Right (walk up, No ADA Accessibility)
 - **2nd Floor**
 - 2A 4 people (individual bathroom)
 - 2B 6 people (individual bathroom)
 - **3rd Floor**
 - 3A 4 people (individual bathroom)
 - 3B 6 people (individual bathroom & shower)
 - **4th Floor**
 - 4A 4 people (shared bathroom in hallway)
 - 4B 2 people (shared bathroom in hallway)
 - 4C 2 people (shared bathroom in hallway)
 - **5th Floor**
 - 5A 4 people (individual bathroom)
 - 5B 6 people (individual bathroom)

HOSPITAL

St. Luke's-Roosevelt Hospital Center 1111 Amsterdam Ave, New York, NY 10025

Transportation

A, B, C, D(@125th & St. Nicolas)

2, 3 to 125th St. (Lennox Ave)

4, 5, 6 to 125th St. (Lexington Ave)

Metro North

MTA Bus Service: M100, M101, M60, M15

HOTEL

Aloft Harlem

CAFÉS

Starbucks

Dunkin' Donuts

RETAIL STORES

Gap Outlet

Children's place

American Apparel

H&M Store

Old Navy

Atmos

Modell's Sporting Goods

Marshalls

Carol's Daughter

Nine West Outlets

DSW

BANKS

Citibank

TD Bank

Chase Bank

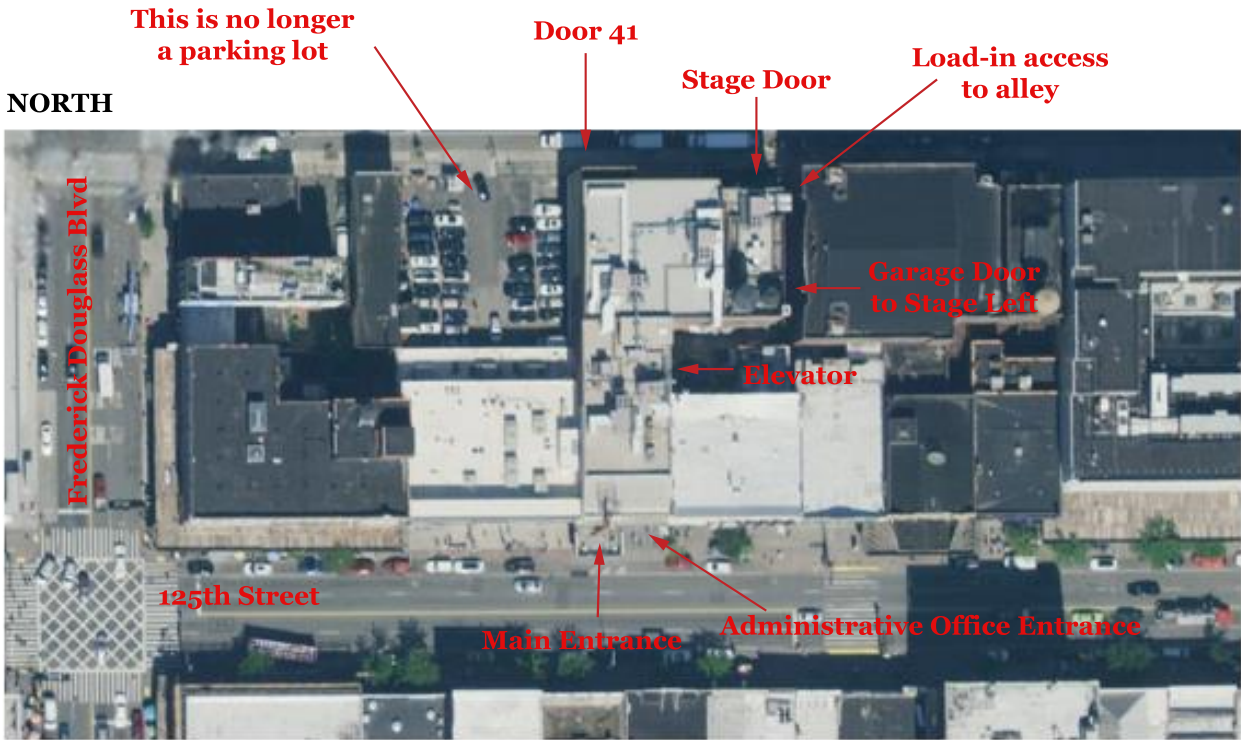
Bank of America

DRUGSTORES

Duane Reade

Rite Aid Pharmacy

APOLLO THEATER BUILDING



APOLLO THEATER NEIGHBORHOOD

NORTH

