

HISTORIC THEATER

TECHNICAL

SPECIFICATIONS

2022-23

APOLLO THEATER

253 West 125TH Street

New York, NY 10027

APOLLO MISSION

HONORING THE LEGACY, ADVANCING THE PATH

The Apollo Theater is a commissioner and presenter; catalyst for new artists, audiences, and creative workforce; and partner in the projection of the African American narrative and its role in the development of American and global culture.

VISION

The Apollo Theater envisions a new American canon centered on contributions to the performing arts by artists of the African diaspora, in America and beyond.

APOLLO OPERATIONS STAFF CONTACT LIST

PRODUCTION STAFF

SR DIRECTOR OF PRODUCTION	Cheles Rhynes	cheles.rhynes@apollotheater.org
PRODUCTION SUPERVISOR	Rebecca Cutino	rebecca.cutino@apollotheater.org
PRODUCTION SUPERVISOR	Jeremy Polk	jeremy.polk@apollotheater.org

HOUSE DEPARTMENT HEADS

HEAD CARPENTER	Christopher Theodore	chris.theodore@apollotheater.org
HEAD ELECTRICIAN	Marvin Garner	marvin.garner@apollotheater.org
HEAD AUDIO	Norman Bullard	norman.bullard@apollotheater.org
HEAD VIDEO	Ameer Shariff	ameer.shariff@apollotheater.org
STEWARD	Jerome Isabell	jerome.isabell@apollotheater.org

VENUE RENTALS & LICENSING

SR DIRECTOR OF THEATER OPERATIONS	Q McKenney	q.mckenney@apollotheater.org
MANAGER OF THEATER OPS	Regina Corchado-Brown	regina.corchado-brown@apollotheater.org
ASSISTANT MANAGER OF THEATER OPS	Deborah Berrios	deborah.berrios@apollotheater.org
HOUSE MANAGER	Christian Doviw	christian.doviw@apollotheater.org
EVENTS COORDINATOR	Monet Morris	monet.morris@apollotheater.org

OPERATIONS STAFF

ASSOCIATE DIRECTOR OF SECURITY	Walter Steele	walter.steele@apollotheater.org
SR. MANAGER OF MAINTENANCE/FACILITIES	Juan Guillen	juan.guillen@apollotheater.org
ASSISTANT MANAGER OF MAINTENANCE	Carlos Gonzaga	carlos.gonzaga@apollotheater.org

THEATER SPECIFICATIONS

AUDITORIUM SEATING CAPACITY

Orchestra	617
Lower Mezzanine	503
Upper Mezzanine	386
Orchestra Boxes	20
Lower Mezz Boxes	12
SRO	30
 TOTAL SEATING:	 1,538

DRESSING ROOMS

Location: Greenroom (37' x 22' 6")

- (2) STAR dressing rooms (10' x 10' each)
 - Each one has its own restroom and shower
 - Accommodates 1-2 people
 - ADA accessible
- (3) Single restrooms
 - ADA accessible

Location: Stage right near the stage door entrance
Four (4) floors of additional dressing rooms:

2nd floor

2A- 4 people (individual restroom)
2B- 6 people (individual restroom)

3rd floor

3A- 4 people (individual restroom)
3B- 6 people (individual restroom and shower)

4th floor

4A- 4 people (share restroom in hallway)
4B- 2 people (share restroom in hallway)
4C- 2 people (share restroom in hallway)

5th floor

5A- 4 people (individual restroom)

TOTAL: (10) dressing rooms
LOADING FROM 126th STREET

Trucks can load/unload on W. 126th Street between Adam Clayton Powell and Frederick Douglass Boulevards. The stage is at street level.

EVENT MEDICS, STAGE MANAGERS, & PAs,

Event Medics & Stage Managers will be provided by the Apollo as standard for all performance at the expense of the client. Production Assistants will be hired as needed depending on the scope of the event.

STAGE SPECIFICATIONS

Proscenium Width:	36' 10" wide
Floor to Proscenium Opening:	28' 2"
At center line to the front of the apron:	4' 5"
Floor to Grid:	56' 5"
Proscenium wall to back wall:	29.5'
Plaster Linen to back wall length:	28'
Main Curtain:	30' high x 60' wide
Stage to Lighting Console (FOH):	52' 11"
Steps in front of stage:	49" long x 42" wide x 35" high

FLY RAIL SYSTEM

Type: Single purchase Arbor system.

Pipe Quantity: 34pipes.

Weight Support: 800 lbs. supported per pipe. Any more weight than 800lbs has to be flown with truss and motors.

TRUSSES

Truss # 1:	2' wide x 7' high x 45' long
Truss # 2:	2 ½' wide x 6 ½' high x 45 ½' long
Truss # 3:	2 ½' wide x 6½' high x 45' long

RISERS

* Please reach out to the Production Department for confirmation of equipment availability

Triangles	6
4x4 Tops	6
2x8 Tops	2
4x8 Tops	13
4x8 w/ Casters	8

RISER LEGS

<u>ITEM</u>	<u>Qty</u>
8 inch	30
16 inch	40
24 inch	70

LECTERN

1- Acrylic Lectern 4'1" high x 3' 5" wide x 1'4.5" deep

Front: 2' high x 2' wide

SOFT GOODS INVENTORY

* Please reach out to the Production Department for confirmation of equipment availability

<u>ITEM</u>	<u>Qty</u>
Black Velour legs- Height: 25' Width: 20'	8
Black Velour Borders- Height: 10' Width: 40'	3
Black Small Borders- Height: 2' Width: 50'	2
White Scrim- Height: 24' 5" Width: 45'	1
Full Black Drape- Height: 48' Width: 45'	1
Grand Stage Drape Red (Guillotine)- Height: 30' Width: 60'	1

Pipe and Drape Inventory

<u>ITEM</u>	<u>Qty</u>
Bases/Pins	30
Uprights-7'-12'	30
Crossbar-telescoping 6'-8'-10'	30
Black Drapes 5' x 12'	36
Burgundy Drapes 5' x 12'	18

MULTIMEDIA PROJECTOR

<u>ITEM</u>	<u>Qty</u>
Barco RLM-W14, 14,500 lumens, WUXGA, 3-chip DLP projector. Active Stereo 3D, Barco TLD+ (2.8-4.5:1) Projector Lens	1
Octo Quattro Switcher with 4-input channels; Model: OTR401	1
Barco Image Pro II	1

SCREENS

Perforated matte white Screen: 28' wide x 16' high

Manufacturer: MDI in Montreal

Gain: approximately 1.0

For best results: 1.5 – 2.0 zoom lens is suggested.

Distance from projector position on the Mezzanine to screen: 36' 6"

**Located downstage covers the width of the stage

Front Projection Screen 14'wide x 10.5' high screen

10' wide x 8' high screen

For best results, the following is suggested:

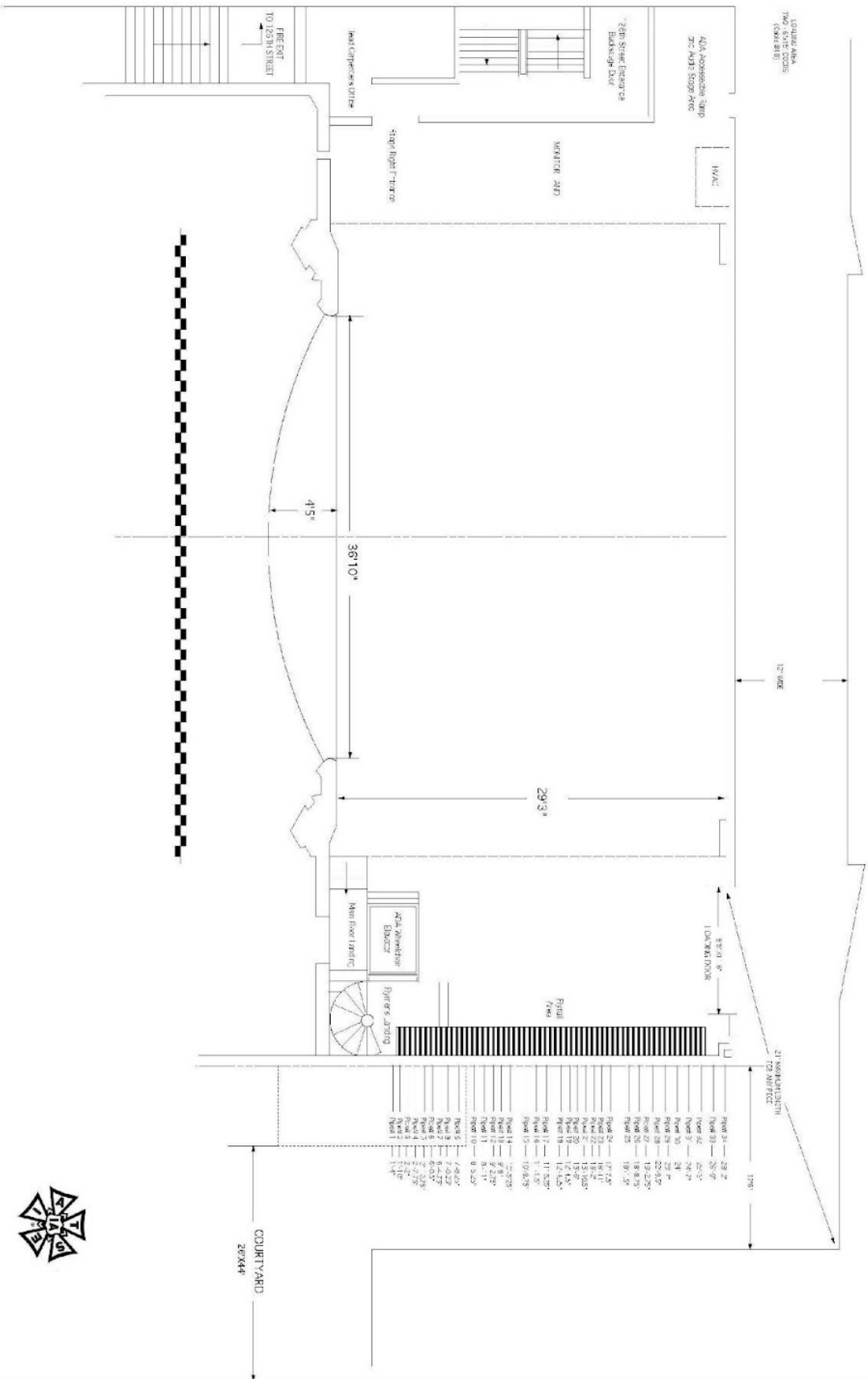
5,000 lumens

2.0 – 2.6 zoom

Distance from projector position to screen: 43' 9"

Apollo Line set Schedule

7,007	26,014
-------	--------



APOLLO THEATER FOUNDATION, INC.

PROJECT: TECHNICAL DRAWING

DESIGNED BY: STEVEN JONES, LANSING, MI
 DRAWN BY: WALTER JONES, JR., LANSING, MI
 DATE: 09/01/07

Apollo Theater Lighting

* Please reach out to the Production Department for confirmation of equipment availability and updated plots

House Power

Basement Stage Right – (1) 200-amp cam-lock with ISO transformer and (2) 100 amps bare end

Stage Right Deck – (1) 100 amps cam-lock

Fly Loft Stage Right - (1) 100-amp cam-lock (2) 400-amp cam-lock

LIGHTING INVENTORY

Consoles

<u>ITEM</u>	<u>Qty</u>
GRAND MA 2 FULL SIZE	1
ETC ION XE CONSOLE WING	1
ETC ION XE LIGHTING CONSOLE	1
ETC ION XE 20	1
GATEWAY ETHERNET TO 4 OUTPUT DMX	1
GRAY DMX SPLITTER	4
ENHANCED2 DMX OPTO SPLITTER	2

Conventional Lights

<u>ITEM</u>	<u>Qty</u>
ETC SOURCE 4 HEAD (LEKO STYLE)	76
ETC 5 DEGREE LENS	5
ETC 10 DEGREE LENS	5
ETC 19 DEGREE LENS	28
ETC 26 DEGREE LENS	23
ETC 36 DEGREE LENS	54
ETC 50 DEGREE LENS	2
ETC 36 DEGREE LENS	54
ETC 50 DEGREE LENS	2
ETC SOURCE 4 PARS	153
SOURCE 4 MFL PAR LEN	134
SOURCE 4 NFL PAR LEN	44
ETC 3 CELL CYC LIGHTS W/ FRAMES	9
4 LITE ACL BAR	4
4 LITE ACL /TRUSS HANG	6
ALTMAN 3 CELL CYC LITE	9
ALTMAN PAR 64 CAN	180
OLD STYLE MUSIC STAND LIGHT	20
OLD NEW STYLE MUSIC STAND LIGHT	18
MUSIC STAND LIGHTS	17

Moving Lights

<u>ITEM</u>	<u>Qty</u>
Robe BMFL Blade Moving Light	17
Chauvet NXT - 1 Moving Pixel Light	8
Chauvet NXT - 1 Moving Pixel Light Road Case	4
GLP Impression X4 10 LED Moving Strip Light	8
High End Xspot Moving Light 700w	4
High End Studio Spot CMY 575w	7
High End Studio Beam 700w	10
American DJ Sweeper LED Strip Light	3
Elation Sixpar 200 LED Fixture	7
LED Wall Washer	10

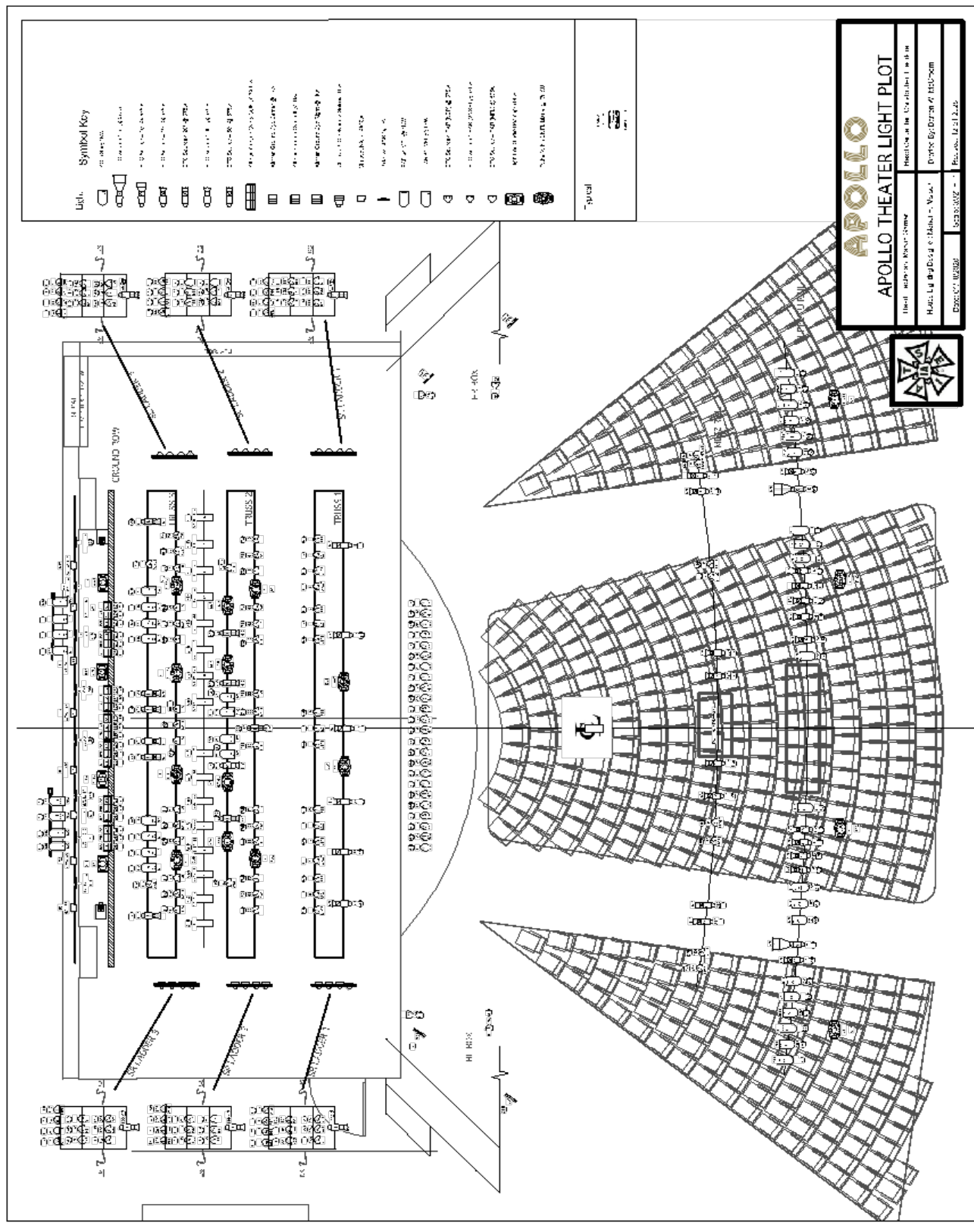
Follow Spots

<u>ITEM</u>	<u>Qty</u>
3k Lycian Follow Spot W/ Ballast	4
Chauvet LED Follow spot Portable 120V.	1

SFX

<u>ITEM</u>	<u>Qty</u>
DF-50 Hazer	1
DMX Controlled Unique Fog Machine	2
Large Qflex LED Tube Light Apollo Letters	1

Apollo Theater Light Plot



Apollo Theater Audio

* Please reach out to the Production Department for confirmation of equipment availability

D&B Audio Technik Loudspeaker System

<u>ITEM</u>	<u>Qty</u>
Midas Pro9 (FOH & Monitor mixing consoles)	2
D&B D80 four channel digital processor/power amplifiers	7
D&B D12 Dual Channel signal processor/power amplifiers	9

D&B FOH RIG

<u>ITEM</u>	<u>Qty</u>
V-Series Line Arrays Left & Right	10
J-Subs (under the stage)	2
J-INFRA Sub (under the stage)	1
E8 Front Fills (under the stage)	4

STAGE MONITORS

<u>ITEM</u>	<u>Qty</u>
D&B M4 floor wedges (10 floor, 1 Cue, 12 mixes onstage)	11
B4 Drum Subwoofer	1
Q7	1
Q Subs	2

Left and Right-Side Fill Stacks

The Midas Pro9 mixing console features:

88- XLR microphone preamps

70- Delay & phase corrected group/aux/matrix/monitor mix busses (35 per console)

10- VCAs full Preset automation, equalization & dynamics on each input channel & output bus and a wide range of digital effects plug-ins.

The console system is fitted with KT DN9650 Network Bridges at each control surface. The monitor console includes a KT DN9331 motorized Graphic EQ Controller.

The Consoles System I/O complement includes:

2 - DL251 48 analog mic/line input x 16 analog outputs backstage

DL451 Modular I/O frame with 24ch. AES 96kHz output to D&B Audio Technik D80 & D12 Main & stage monitor amplifiers

DL444 D-Sub card providing 8 analog XLR outputs at FOH & monitor control surfaces

DL443 8ch. Analog TRS inserts at FOH & Monitor control surfaces

DL452 8ch. Digital AES I/O at FOH & Monitor control surface

Apollo Audio Inventory

<u>Item</u>		<u>Type</u>	<u>Qty</u>
MICROPHONES			
AKG	C411	CONDENSER	1
AKG	C414	CONDENSER	2
AKG	C460 B	CONDENSER	1
AKG	D112	DYNAMIC	2
AUDIO-TECHNICA	AT4050	CONDENSER	1
AUDIO-TECHNICA	U857Q	CONDENSER	1
AUDIX	D2	DYNAMIC	2
BEYERDYNAMIC	M69N	DYNAMIC	1
BEYERDYNAMIC	M88N	DYNAMIC	1
COUNTRYMAN		CONDENSER	1
DEW IT RIGHT TAP MICS		CONDENSER	5
DPA	4060	CONDENSER	4
DPA	4065	CONDENSER	4
DPA	4080	CONDENSER	10
DPA	4099	CONDENSER	2
ELECTRO VOICE	N/D468	DYNAMIC	5
ELECTRO VOICE	RE20	DYNAMIC	4
MICRO DOT		DYNAMIC	19
NEUMANN	KSM 100	CONDENSER	2
NEUMANN	KSM 184	CONDENSER	7
NEUMANN	KSM 185	CONDENSER	2
POINT SOURCE		CONDENSER	6
SAMSON	CM20P	CONDENSER	1
SENNHEISER	MD 421	DYNAMIC	7
SENNHEISER	MD 441	DYNAMIC	2
SENNHEISER	e604	DYNAMIC	1
SENNHEISER	e609	DYNAMIC	1
SHURE	beta 52	DYNAMIC	3
SHURE	beta 57	DYNAMIC	6
SHURE	beta 58	DYNAMIC	3
SHURE	beta 91	CONDENSER	1
SHURE	beta 91A	CONDENSER	2
SHURE	beta 98	CONDENSER	7
SHURE	MX202	CONDENSER	8
SHURE	MX391	CONDENSER	1
SHURE	MX393	CONDENSER	4
SHURE	MX412D/C	DYNAMIC	1
SHURE	SM55	DYNAMIC	3
SHURE	SM57	DYNAMIC	20

<u>Item</u>		<u>Type</u>	<u>Qty</u>
SHURE	SM58	DYNAMIC	22
SHURE	SM81	CONDENSER	4
SHURE	UR2/SM58	DYNAMIC	15

DIs

RADIAL JDI		Passive	6
RADIAL JDI		Passive	2
BSS		Active	4
COUNTRYMAN		Active	4

ADDITIONAL GEAR

AUDIO-TECHNICA	AT8531	PREAMP	1
SHURE	MX1BP	PREAMP	1
SHURE	UR1	BELT PACK	15
		1X3 SPLITTER	1

Backline

DRUM KIT

- (1) 8" DW tom
- (1) 12" DW tom
- (1) 14" DW tom
- (1) 16" DW tom
- (2) 14" x 6.5" REMO snare
- (1) 14" x 7.5" REMO snare
- (1) 20" DW bass drum
- (1) 22" DW bass drum
- 12" Thin Splash
- 14" Thin Crash
- 18" Thin Crash
- 19" Thin Splash
- 20" Thin Splash
- 22" Medium Thin Ride
- 14" Medium Thin Hi-Hat
- 12" China Splash
- 10" Thin Splash
- (6) cymbal stands
- (2) snare stands
- (2) high hat stands
- (1) single DW kick pedal
- (1) double DW kick panel
- (1) DW Drum Throne
- (1) DW 18" floor Tom

DJ Gear

- (1) Pioneer DDJ-SZ2 4-channel controller for Serato
- (1) Pioneer DJ PLX-500-K Direct Drive DJ Turntable, Black w/Pioneer DJ DJM-450 DJ Mixer
- (2) Pioneer CDJ-2000NXS2 Pro-DJ Multi-Player - Black Bundle with DJM-900NXS2 Mixer

GUITARS AMPS

- (1) Roland JC - 120
- (1) Fender Deville 410 III

BASS AMPS and CABINETS

- (1) Epifani UL901 bass head
- (1) Epifani UL501 bass head
- (1) Epifani Bass Speaker Cabinet with 4 x10 speakers

KEYBOARDS

- (2) Korg Kronos 88 key
- (2) Korg Kronos 73 key
- (1) Korg Triton
- (1) Korg Triton Pro
- (1) Yamaha Motif 8

Surrounding the Apollo

SUBWAY

- A) A, B, C, D to 125th St.
- B) 2, 3 to 125th St. (Lennox Ave)
- C) 4, 5, 6 to 125th St. (Lexington Ave)

ADDITIONAL TRANSPORTATION

- Y) Metro North
- Z) MTA Bus Service: M100, M101, M60, M14

CAR SERVICE

Harlem Car Service
(212) 663-8080

HOTEL

- D) Aloft Harlem

CAFÉ

- E) Starbucks
- F) Duncan Donuts

RETAIL STORE

- G) Gap
- H) Children's place
- I) American Apparel
- J) H&M Store
- K) Old Navy
- L) Atmos
- M) Modell's Sporting Good
- N) Marshalls
- O) Carol's Daughter
- P) Nine West Outlets
- Q) DSW

PARKING

125th Street Garage
121 West 125th Street
New York, NY 10027
(212) 531-3418

BANKS

- R) Citibank
- S) TD Bank
- T) Chase Bank
- U) Bank of America

CLEANERS

Grace Cleaners
270 St. Nicholas Ave
New York, NY 10027

DRUGSTORE

- W) CVS Pharmacy | Photo
- X) Rite Aid Pharmacy

HOSPITALS

St. Luke's-Roosevelt Hospital Center
1111 Amsterdam Ave, New York, NY 10025

RESTAURANTS & BARS

Africa Kine Restaurant
Amy Ruth's
Boulevard Bistro
Cedric French Bistro
Dinosaur Bar-B-Que
Harlem Shake
Harlem Tavern
Lido
Harlem Bar B Q
Red Lobster Seafood Restaurant
Les Ambassades
Maison Harlem
Manna's
MOCA Restaurant Lounge
Settepani
Sylvia's Restaurant
67 Orange Street
Bier International
Corner Social
Harlem Public
Harlem Tavern
Red Rooster
Showman's Cafe
Ginny's Supper Club @Red Rooster

