

APOLLO

SOUND STAGE

TECHNICAL SPECIFICATIONS

2022-23

APOLLO THEATER

253 West 125TH Street

New York, NY 10027

1 of 11

APOLLO MISSION & VISION

HONORING THE LEGACY, ADVANCING THE PATH

The Apollo Theater is a commissioner and presenter; catalyst for new artists, audiences, and creative workforce; and partner in the projection of the African American narrative and its role in the development of American and global culture.

The Apollo Theater envisions a new American cannon centered on contributions to the performing arts by artists of the African diaspora, in America and beyond.

APOLLO THEATER

253 West 125TH Street

New York, NY 10027

2 of 11

TABLE OF CONTENTS

APOLLO MISSION & VISION.....2
TABLE OF CONTENTS.....3
APOLLO OPERATIONS STAFF CONTACT LIST.....4
GENERAL INFORMATION.....5
DIMENSIONS & SEATING CAPACITY.....6
STAGE DIMENSIONS & INVENTORY.....7
LIGHTING INVENTORY & POWER.....8
AUDIO INVENTORY & SOUND SYSTEM.....9
BACKLINE INVENTORY.....11
VIDEO INVENTORY.....12

APPENDIX

LIGHT PLOT.....A
CHANNEL HOOK UP.....B
AREA MAP.....C

APOLLO OPERATIONS STAFF CONTACT LIST

PRODUCTION STAFF

SR DIRECTOR OF PRODUCTION	Cheles Rhynes	cheles.rhynes@apollotheater.org
PRODUCTION SUPERVISOR	Jeff Aldrich	jeff.aldrich@apollotheater.org
PRODUCTION SUPERVISOR	Frank Cortez	frank.cortez@apollotheater.org
PRODUCTION SUPERVISOR	Rebecca Cutino	rebecca.cutino@apollotheater.org

HOUSE DEPARTMENT HEADS

HEAD CARPENTER	Chris Theodore	chris.theodore@apollotheater.org
HEAD ELECTRICIAN	Marvin Garner	marvin.garner@apollotheater.org
HEAD AUDIO	Norman Bullard	norman.bullard@apollotheater.org
HEAD VIDEO	Ameer Shariff	ameer.shariff@apollotheater.org
STEWARD	Jerome Isabell	jerome.isabell@apollotheater.org

VENUE RENTALS & LICENSING

SR DIRECTOR OF OPERATIONS	Q McKenney	q.mckenney@apollotheater.org
MANAGER OF THEATER OPS	Regina Corchado-Brown	regina.corchado-brown@apollotheater.org
PROJECT MANAGER	Christian Doviw	christian.doviw@apollotheater.org
EVENTS COORDINATOR	Monet Morris	monet.morris@apollotheater.org

OPERATIONS STAFF

ASSOCIATE DIRECTOR OF SECURITY	Walter Steele	walter.steele@apollotheater.org
EVENTS SERVICES MANAGER	Chad Battle	chad.battle@apollotheater.org

GENERAL INFORMATION

LOCATION

APOLLO THEATER
253 West 125TH Street
New York, NY 10027

VISITING THE APOLLO

Enter the building from 125th St. through the silver security door east of the Marquee labeled ADMINISTRATIVE OFFICES to check in with Security, who will contact the Apollo staff you are meeting.

LOADING IN

When loading into the Apollo, enter the theater from 126TH street check in with Security Red STAGE DOOR. Address:

252 W 126th Street
New York, NY 10027

Trucks will drop gear in the Loading Zone behind the theater. Stage crew will load gear through the alley behind the theater to the roll door upstage left. The stage is street level and there is no loading doc. A Forklift rental and union operator will be required if incoming trucks do not have or cannot utilize a lift gate attached to the truck.

Loaders will be hired by the Apollo.

Load into the venue can also be arranged through Door 41 which leads from 126th street to the back of the House.

ELEVATOR DIMENSIONS

A Freight elevator opens to the Lobby and the Courtyard and will be used to bring equipment to the Soundstage located on the 3rd Floor.

Length: 10 feet Width: 8.5 feet Height: 9 feet

CAR PARKING

It is the client's responsibility to make arrange for all car parking, the Apollo has no standing relationships with local parking facilities. A list of local parking facilities is in the appendix.

TRUCK & BUS PARKING

Long term truck and bus parking must be pre-arranged with the Associate Director of Security Walter Steele and require permits from the city.

EVENT MEDICS, STAGE MANAGERS, & PAs,

Event Medics & Stage Managers will be provide by the Apollo as standard for all performance at the expense of the client. Production Assistants will be hired as needed depending on the scope of the event.

APOLLO THEATER
253 West 125TH Street
New York, NY 10027

DIMENSIONS & SEATING CAPACITY

DIMENSIONS

Soundstage Working Floor Space	2960 sq. feet
Elevator Lobby Area:	13' x 25'
(2) ADA Compliant Restrooms:	5'x7' (each)

SEATING CAPACITY

Capacity is determined by seating arrangement.

Cocktail Lounge	180
Theater	180
Banquet	145
Music Cafe	150

DRESSING ROOMS

There are no dressing rooms on the Soundstage or 3rd floor level. Operations Dept will need confirmation if any additional spaces are needed for talent and/or client event support staff.

STAGE DIMENSIONS & INVENTORY

DIMENSIONS

Stage Dimensions	20' wide x 12' deep x 2' high
Grid Height	18' 4"
Stage to Lighting Console (FOH):	36'
Steps in Front of Stage (2 units available): rise	3' wide x 2' deep x 1'4" high x 7"

INVENTORY

RISERS

- (2) Triangles
- (1) 4x4
- (7) 4x8 (Sound stage) comprising new rolling unit 12x24

LECTERN*

- (1)** 4'1" high x 3' 5" wide x 1'4.5" deep; Front: 2' high x 2' wide
- *Shared w/the mainstage and must be booked in advance to confirm use.*

SOFT GOODS INVENTORY

SOFT GOODS*

- (30) Bases/Pins
 - (30) Uprights-7'-12'
 - (30) Crossbar-telescoping 6'-8'-10'
 - (36) Black @ 5' x 12'
- *Shared w/the mainstage and must be booked in advance to confirm use.*

APOLLO THEATER

253 West 125TH Street

New York, NY 10027

7 of 11

LIGHTING INVENTORY & POWER

CONTROL

- (1) ETC ION XE Lighting Console
- (1) ETC sensor dimming system - 96 2.4 K Dimmers

MOVING LIGHTS

- (6) High End Studio Spot
- (5) High End Studio Beams
- (3) American DJ Sweeper Beams

LEDS

- (6) Elation Six Pars 200

CONVENTIONALS

- (41) Par 64 1K
- (28) ETC Source Four Leko's
- (4) ETC Source Four Pars
- (4) Altman Cyc Units
- (4) Pin Spots

MISC

- (1) APOLLO sign 9'9" to bottom for riser, 11'9" to bottom from floor C
- (1) CHAUVET LED Followspot 120ST Portable LED Spotlight

POWER

- (1) 200-amp Cam lock service panel

LIGHT PLOT (See Appendix A)

CHANNEL HOOK UP (See Appendix B)

APOLLO THEATER

253 West 125TH Street

New York, NY 10027

8 of 11

AUDIO INVENTORY & SOUND SYSTEM

MICROPHONES

- | | |
|--|--------------------|
| (4) Shure SM 58 Wireless (j5 578-638mhz) | (4) Shure SM 58 |
| (3) Shure SM 58 (switch) | (3) Shure Beta 58 |
| (1) Shure Beta 52 | (1) Shure Beta 91A |
| (7) Shure 57 | (2) Shure Beta 57 |
| (1) Shure SM 81 | (2) Neumann KM 184 |

DIs

- (1) Whirlwind Computer DI
- (4) Radial Stereo DI

SPEAKERS

- (4) D&B Audio Individual Array speaker cabinets
- (2) D&B Audio Subwoofers

MONITORS

- (4) D&B
- (4) LG

CONSOLE

Midas PRO1-IP 40-channel Digital Mixer (40 Input Channels, 24 MIDAS Microphone Preamplifiers, 27 Mix Buses and 96 kHz Sample Rate)

ADDITIONAL GEAR

- (1) Klark Teknik DN9650 Digital Audio Network Bridge
- (1) Madiface available upon request

COMMUNICATIONS

We use Clear Comm

APOLLO THEATER

253 West 125TH Street

New York, NY 10027

9 of 11

BACKLINE INVENTORY

BACKLINE

- (1) Korg Kronos (88 key)
- (1) Korg Kronos (73 key)
- (1) Yamaha Motif 8 (keyboard)
- (2) Eden Bass Speaker Cabinets
- (1) Epifani bass head
- (1) Roland JC-120
- (2) Roland KC-500 Keyboard Amps

DRUMS

- (1) DW Drum Set*:
 - a. Rack Toms 10", 12", 14"
 - b. (1) 16" floor tom
 - c. (1) 20" kick
 - d. (1) drum rack with (4) cymbal stands e. (1) Hi-hat stand

***Drummer are expected to bring his own cymbals, snare & stand, & kick pedal; however these items are available upon advance request and arrangement w/Apollo Production Department.**

DJ Gear**

- (1) Pioneer DDJ-SZ2 4-channel controller for Serato
- (2) Pioneer DJ PLX-500-K Direct Drive DJ Turntable, Black w/Pioneer DJ DJM-450 DJ Mixer
- (2) Pioneer CDJ-2000NXS2 Pro-DJ Multi-Player - Black Bundle with DJM-900NXS2 Mixer

****This gear is shared with the mainstage on a first come first serve basis and must be booked in advance ensure availability.**

VIDEO INVENTORY

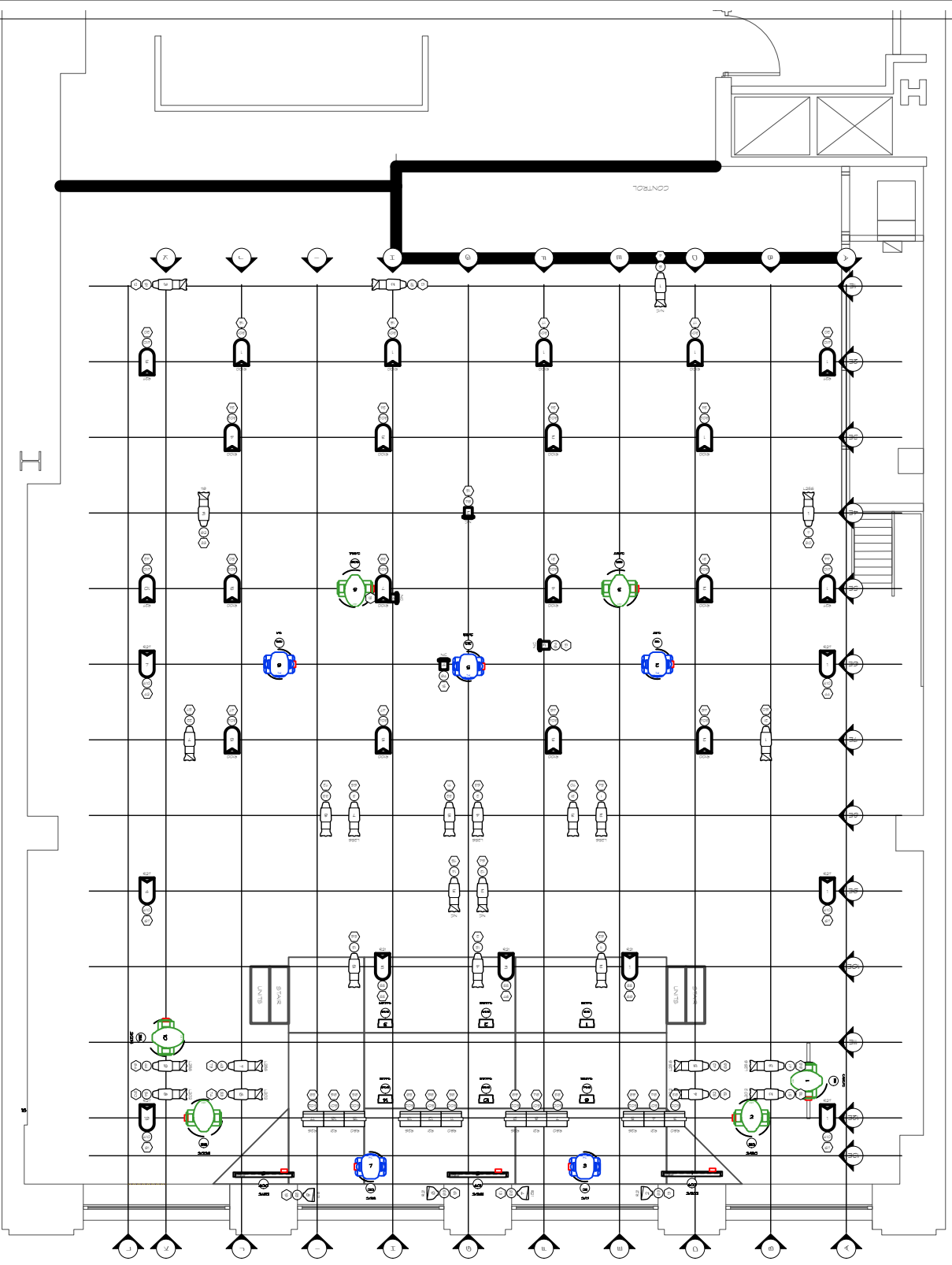
Please note all screens are front-projection.

MULTIMEDIA PROJECTOR

- (1) Panasonic EX12KU - XGA LCD 12000 Lumen Projector w/ 2.6 – 3.5 Zoom Lens
- (1) MacBook Pro
- (2) Dell Laptops (for PowerPoint presentations only)
- (2) Toshiba DVD players
- (1) Blackmagic Design ATEM Television Studio Pro HD Live Production Switcher








SCREENS

- (1) Show screen 96” high x 120” wide - automated
 - Manufacturer: Draper, Inc
 - Distance from projector position to screen: 38’
- (1) Education & Meeting screen 54” high x 96” wide - automated
 - Manufacturer: Elite Screens
 - Distance from projector position to screen: 40’



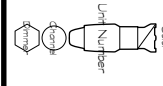
1 [SOUND STAGE LIGHTING PLOT]
Scale: 1/8" = 1'-0"

KEY TO SYMBOLS

-  Pin Spot 4
-  PAR 64 WFL 29
-  ETC Source4 20deg 19
-  ETC Source4 PAR NSP 4
-  High End Systems Studio Beam PC 5
-  High End Systems Studio Spot CMY 6
-  ADJ Sweeper Beam Quad LED 3

THIS DRAWING REPRESENTS VISUAL CONCEPTS AND CONSTRUCTION SUGGESTIONS ONLY. THE LIGHTING DESIGNER IS NOT RESPONSIBLE FOR THE ELECTRICAL OR MECHANICAL CONSTRUCTION OF THE DESIGN AND WILL NOT BE RESPONSIBLE FOR THE CONSTRUCTION OR USE. ALL MATERIALS AND CONSTRUCTION MUST MEET THE MOST STRINGENT LOCAL AND STATE CODES.

LEGEND



Measurement Notes:
-Grid is 16'2 1/2" from the floor
-Stage Deck is 2' High, 20'12" w/ triangle extensions upstage
-Speakers above stage hang down to 1111"
-Projector Platform is 14' 11" from floor
-Spacing of circles on the runway area to be 26'



APOLLO THEATER
253 W 125th St
New York, NY 10027

SOUNDSTAGE LX PLOT

Client Selection	Project ID
MARKIN GARNER	SOUNDSTAGE
Project To:	Scale:
JEFF ALDRICH	1/8" = 1'0"
Client/Owner/Production:	Project No.:
CHELES RHYNES	1
Date:	of:
2/6/22	1
DOC File Name:	
SOUNDSTAGE LX.PLT (253152323.rvt)	

Channel	Position	U#	Inst Type & Access & Load	Purpose	Clr & Gb	Dim	Addr
(1)	Electric-8	2	ETC Source4 36deg 575w	right front	L256	54	
(2)	Electric-8	4	ETC Source4 36deg 575w	center front	L256	63	
(3)	Electric-8	7	ETC Source4 36deg 575w	left front	L256	65	
(5)	Electric - 1	2	ETC Source4 26deg 575w	FOLLOW SPOTS	N/C	3	
(6)	Electric - 1	1	ETC Source4 26deg 575w	FOLLOW SPOTS	N/C	4	
(7)	Electric-4	1	ETC Source4 26deg 575w	Special - dj jump	L256	30	
(8)	Electric - 1	1	ETC Source4 26deg 575w	FOLLOW SPOTS	N/C	5	
(11)	Electric-10	2	ETC Source4 36deg 575w	US Front		62	
(12)	Electric-9	2	ETC Source4 26deg 575w	Gobo Unit - Music Cafe	NC, T: Apollo Music Cafe	64	
(13)	Electric-10	6	ETC Source4 36deg 575w	US Front		56	
(14)	Electric-9	3	ETC Source4 26deg 575w	Gobo Unit - Comedy	NC	75	
(15)	Electric-10	4	ETC Source4 36deg 575w	US Front		2	
(21)	Electric - 7	1	ETC Source4 26deg 575w	Special		60	
(22)	Electric-7	7	ETC Source4 26deg 575w	Special		57	
(31)	Electric-8	3	ETC Source4 36deg 575w	Special		70	
(32)	Electric-8	5	ETC Source4 36deg 575w	Special		71	
(33)	Electric-8	8	ETC Source4 36deg 575w	Special		72	
(41)	Electric-11 1/2	3	ETC Source4 26deg 575w	Fill	L256	86	
(42)	Electric-11 1/2	5	ETC Source4 26deg 575w	Fill	L256	68	
(43)	Electric-11 1/2	7	ETC Source4 26deg 575w	Fill	L256	73	

Channel	Position	U#	Inst Type & Access & Load	Purpose	Clr & Gb	Dim	Addr
(44)	Electric-11 1/2	9	ETC Source4 26deg 575w	Fill	L256	84	
(51)	Electric-11 1/2	2	ETC Source4 26deg 575w	Hi Side Warm SR	L202	76	
(52)	Electric-11 1/2	4	ETC Source4 26deg 575w	Hi Side Warm SR	L202	79	
(53)	Electric-11 1/2	6	ETC Source4 26deg 575w	Hi Side Warm SL	L202	74	
(54)	Electric-11 1/2	8	ETC Source4 26deg 575w	Hi Side Warm SL	L202	90	
(55)	Electric-10	1	PAR 64 WFL 1kW	Floor Backlight -- Audience Blinders	R21	69	
	"	3	"	"	"	48	
	"	5	"	"	"	55	
(91)	Electric - 1	2	ETC Source4 26deg 575w	Special - Bar		12	
	"	3	"	"		"	
(92)	Electric-4	3	ETC Source4 26deg 575w	apollo sign	119	33	
(93)	STAGE DECK	2	ETC Source4 PAR NSP 575w	Hollywood Cross	R21	13	
	"	4	"	"	"	"	
	"	6	"	"	"	19	
	"	8	"	"	"	"	
(94)	E	3	Pin Spot 30w	Mirror Ball	NC	15	
	Electric-4	2	"	"	"	"	
	F	4	"	"	"	"	
	G	6	"	"	"	"	
(201)	F	5	Mirror Ball	Mirror Ball			2/411
(211)	Electric-6	2	High End Systems Studio Beam PC 800w	Special - ML Wash			2/17
	Electric-13	3	"	"		2	"

Channel	Position	U#	Inst Type & Access & Load	Purpose	Clr & Gb	Dim	Addr
(212)	F	5	High End Systems Studio Beam PC 800w	Special - ML Wash			2/33
	G	7	"	"			"
(213)	Electric-6	6	High End Systems Studio Beam PC 800w	Special - ML Wash			2/1
(301)	E	1	PAR 64 WFL 1kW	House Lights	R100	17	
	G	"	"	"	"	18	
	I	"	"	"	"	"	
	C	"	"	"	"	17	
(302)	E	2	PAR 64 WFL 1kW	House Lights	R100	24	
	Electric-3	1	"	"	"	"	
	"	3	"	"	"	"	
	"	4	"	"	"	"	
(303)	Electric-5	2	PAR 64 WFL 1kW	House Lights	R100	31	
	"	4	"	"	"	"	
	"	7	"	"	"	39	
	"	9	"	"	"	50	
(304)	Electric-7	2	PAR 64 WFL 1kW	House Lights	R100	46	
	"	3	"	"	"	"	
	"	5	"	"	"	47	
	"	6	"	"	"	"	
(311)	Electric-11 1/2	1	High End Systems Studio Spot CMY 700w	Special - ML Spot			2/250
(312)	Electric-12	2	High End Systems Studio Spot CMY 700w	Special - ML Spot			2/130
(313)	Electric-12	18	High End Systems Studio Spot CMY 700w	Special - ML Spot			2/226
(314)	Electric-11 1/2	10	High End Systems Studio Spot CMY 700w	Special - ML Spot			2/274

Channel	Position	U#	Inst Type & Access & Load	Purpose	Clr & Gb	Dim	Addr
(315)	D	3	High End Systems Studio Spot CMY 700w	Special - ML Spot			2/317
(321)	Electric-11	1	Sixpar 200 150w	DOWNLIGHT			2/451
(322)	Electric-11	2	Sixpar 200 150w	DOWNLIGHT			2/459
(323)	Electric-11	3	Sixpar 200 150w	DOWNLIGHT			2/467
(324)	Electric-12	6	Sixpar 200 150w	DOWNLIGHT			2/475
(325)	Electric-12	10	Sixpar 200 150w	DOWNLIGHT			2/483
(326)	Electric-12	14	Sixpar 200 150w	DOWNLIGHT			2/491
	Electric-5	8	High End Systems Studio Spot CMY 700w	Special - ML Spot			2/154
(400)	STAGE DECK	9	ADJ Sweeper Beam Quad LED 81w	Eye Candy	NC		2/412
(401)	STAGE DECK	5	ADJ Sweeper Beam Quad LED 81w	Eye Candy	NC		2/361
(402)	STAGE DECK	1	ADJ Sweeper Beam Quad LED 81w	Eye Candy	NC		2/322
(410)	Electric-12	1	PAR 64 WFL 1kW	Curtain Warmer	R27		67
	Electric-9	"	"	"	"		"
	"	4	"	"	"		"
	J-2	19	"	"	"		91
	Electric-6	1	"	"	"		44
	"	7	"	"	"		42
	Electric-5	10	"	"	"		"
	Electric-2	1	"	"	"		20
	"	3	"	"	"		"
	A	1	"	"	"		44

Channel	Position	U#	Inst Type & Access & Load	Purpose	Clr & Gb	Dim	Addr
(500)	Electric-12	3	Altman 3 Cell Sky Cyc Left 1kW	RED CYC	R80	93	1/93
	"	7	"	"	"	"	"
	"	11	"	"	"	95	1/95
	"	15	"	"	"	"	"
(501)	Electric-12	4	Altman 3 Cell Sky Cyc Center 1kW	AMBER CYC	R21	94	1/94
	"	8	"	"	"	"	"
	"	12	"	"	"	96	1/1
	"	16	"	"	"	"	"
(502)	Electric-12	5	Altman 3 Cell Sky Cyc Right 1kW	CYC RED	R26	89	1/89
	"	9	"	"	"	"	"
	"	13	"	"	"	59	1/59
	"	17	"	"	"	"	"

SUBWAY

- A) A, B, C, D to 125th St.
- B) 2, 3 to 125th St. (Lennox Ave)
- C) 4, 5, 6 to 125th St. (Lexington Ave)

HOTEL

- D) Aloft Harlem

CAFÉ

- E) Starbucks
- F) Duncan Donut

RETAIL STORE

- G) Gap Outlet
- H) Children's place
- I) American Apparel
- J) H&M Store
- K) Old Navy
- L) Atmos
- M) Modell's Sporting Good
- N) Marshalls
- O) Carol's Daughter
- P) Nine West Outlets
- Q) DSW

BANKS

- R) Citibank
- S) TD Bank
- T) Chase Bank
- U) Bank of America

DRUGSTORE

- V) Duane Reade
- W) CVS Pharmacy | Photo
- X) Rite Aid Pharmacy

ADDITIONAL TRANSPORTATION

- Y) Metro North
- Z) MTA Bus Service: M100, M101, M60, M15

BARS

67 Orange Street

Bier International
Corner Social

Harlem Public
Harlem Tavern
Moca Lounge

Red Rooster
Showman's Cafe
Ginny's Supper Club @Red Rooster

RESTARANTS

Africa Kine Restaurant
Amy Ruth's
Boulevard Bistro
Cedric French Bistro
Dinosaur Bar-B-Que
Harlem Shake
Harlem Tavern
Lido
Chez Lucienne French Bistro
Harlem Bar B Q
Red Lobster Seafood Restaurant
Joe's Crab Shack
Les Ambassades
Maison Harlem
Manna's
MOCA Restaurant Lounge
Settepani
Sylvia's Restaurant

CAR SERVICE

Harlem Car Service
(212) 663-8080

CLEANERS

Grace Cleaners
270 St. Nicholas Ave
New York, NY 10027

HOSPITALS

St. Luke's-Roosevelt Hospital Center
1111 Amsterdam Ave, New York, NY 10025

PARKING

125th Street Garage
121 West 125th Street
New York, NY 10027
(212) 531-3418